

## UN/CEFACT – ISC-PDA/Trade Finance Facilitation – P1116(2)

UNITED NATIONS  
CENTRE FOR TRADE FACILITATION AND ELECTRONIC BUSINESS  
(UN/CEFACT)

INTERNATIONAL SUPPLY CHAIN PROGRAMME DEVELOPMENT AREA  
TRANSPORT AND LOGISTICS DOMAIN

CARGO INSURANCE PROCESS

**SOURCE:** TRADE FINANCE FACILITATION – FINANCE & INSURANCE TEAM  
**ACTION:** Draft development

**DATE:** 08 December 2024

**Disclaimer (Updated UN/CEFACT Intellectual Property Rights Policy – ECE/TRADE/C/CEFACT/ 2010/20/Rev.2)**

- ECE draws attention to the possibility that the practice or implementation of its outputs (which include but are not limited to Recommendations, norms, standards, guidelines and technical specifications) may involve the use of a claimed intellectual property right.
- Each output is based on the contributions of participants in the UN/CEFACT process, who have agreed to waive enforcement of their intellectual property rights pursuant to the UN/CEFACT IPR Policy (document ECE/TRADE/C/CEFACT/2010/20/Rev.2 available at [http://www.unecce.org/cefact/cf\\_docs.html](http://www.unecce.org/cefact/cf_docs.html) or from the ECE secretariat). ECE takes no position concerning the evidence, validity or applicability of any claimed intellectual property right or any other right that might be claimed by any third parties related to the implementation of its outputs. ECE makes no representation that it has made any investigation or effort to evaluate any such rights.
- Implementers of UN/CEFACT outputs are cautioned that any third-party intellectual property rights claims related to their use of a UN/CEFACT output will be their responsibility and are urged to ensure that their use of UN/CEFACT outputs does not infringe on an intellectual property right of a third party.
- ECE does not accept any liability for any possible infringement of a claimed intellectual property right or any other right that might be claimed to relate to the implementation of any of its outputs.

## Document Summary

Document Item	Current Value
Document Title	CARGO INSURANCE PROCESS
Date Last Modified	08-December-2024
Current Document Version	1.01.06
Status	Draft
Document Description	Specification that describes the business processes and requirements for the cargo insurance process in the trade finance facilitation.

## Log of Changes

Date of Change	Version	Paragraph Changed	Summary of Changes
13 May 2024	1.01.01		The 1 <sup>st</sup> draft of the BRS.
28 May 2024	1.01.02		Editorial correction.
17 June 2024	1.01.03		Bulk cargo accepted Multiple consignments for an insurance Manipulate the information model Editorial corrections
25 July 2024	1.01.04		Specify the term “Applicant” and “Accountee” for the insurance process.
10 August 2024	1.01.05		Editorial correction by team review
08 December 2024	1.01.06		Editorial correction by the resolution for the public review

## Table of Contents

<b>1. Preamble</b> .....	4
<b>2. References</b> .....	4
<b>3. Objectives</b> .....	5
<b>4. Scope</b> .....	5
<b>5. Business Requirement View</b> .....	7
<b>5.1 Business Domain Use Case</b> .....	7
<b>5.2 Business Collaboration Use Case</b> .....	8
<b>5.3 Use Case Description</b> .....	9
5.3.1 Use Case Description .....	9
<b>5.4 Business Process Elaboration</b> .....	11
5.4.1 Insurance Document Application Business Process .....	11
5.4.2 Cargo Insurance Claim Business Process .....	14
<b>5.5 Information Model Definition</b> .....	17
5.5.1 Business Entity Relationship Overview .....	17
5.5.2 Insurance Business Document.....	18
<b>5.6 Business Rules</b> .....	35
<b>6 Definition of Terms</b> .....	35

## **1. Preamble**

This document describes the cargo insurance process being a part of the trade finance facilitation. The business entities used in the cargo insurance process are defined in the trade finance reference data model under the Buy-Ship-Pay reference data model.

The Cargo Insurance Document serves to provide evidence of insurance coverage, fulfilling various international trade and regulatory needs presented as Certificate of Insurance or Insurance Policy.

While legal recognition and negotiability may vary by jurisdiction, the cargo insurance document adheres to established international practices, despite the absence of specific international conventions or rules governing its contents or usage. Both ICC Uniform Rules for Documentary Credits (UCP) and Incoterms reference these insurance documents, reinforcing their significance in international trade and commerce.

## **2. References**

- UML Profile for UN/CEFACT's Modeling Methodology (UMM) Base Module Technical Specification - Version 2.0, 01 April 2011
- UML Profile for UN/CEFACT's Modeling Methodology (UMM) Foundation Module Technical Specification - Version 2.0, 01 April 2011
- Core Components Technical Specification -Version 2.01,15 November 2003
- Core Components Business Document Assembly Technical Specification - Version 1.0, 27 June 2012
- BUY – SHIP – PAY Reference Data Model (BSP-RDM) - Version 1.0, 13 August 2019
- Supply Chain Reference Data Model (SCRDM) - Version: 1.0.2, 9 January 2017
- Multi Modal Transport Reference Data Model (MMTRDM) – Version 1.0, 01 March 2018
- UNECE Recommendation No.5 Rev.1 Abbreviation of INCOTERMS, 2020
- UN/EDIFACT message IFTMCA (Consignment advice message)
- ICC: Uniform Customs and Practice for Documentary Credits, Revision 2007, Publication no. 600
- ICC DSI: Key Trade Documents and Data Elements, April 2024
- ICC UCP PUBL 600
- ICC ISBP PUBL 821

### 3. Objectives

The objective of this document is to standardize the business processes, the business transactions and the information entities of the cargo insurance process used by the industries in the trade finance, supply chain and transport and logistics.

The business process is the detailed description of the way trading partners, insurance companies, transport and logistics players and financial institutions intend to play their respective roles, establish business relations and share responsibilities to interact efficiently with the support of their respective information systems.

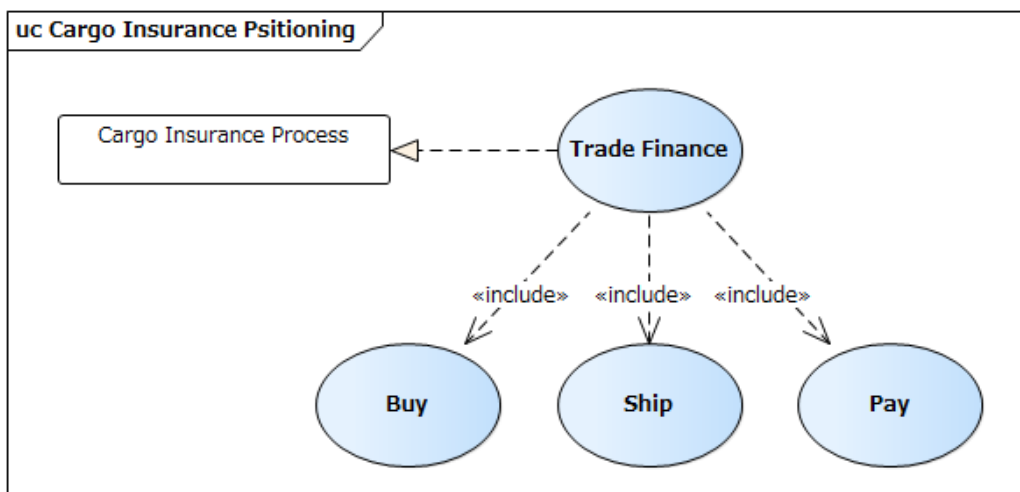
Each business transaction is realized by an exchange of business documents which may be digitized in the form of electronic messages. The particular sequence in which these documents are exchanged creates various scenarios which are presented as use cases in this document.

The business documents are composed of business information entities (BIE), which are preferably taken from libraries of reusable business information entities. The contents of the business documents and the business information entities are presented using class diagrams and/or requirement lists.

### 4. Scope

The cargo insurance is a type of insurance that protects goods or merchandise during transit against loss or damage. In the context of trade, where goods are often transported across long distances by various modes of transportation such as ships, airplanes, trucks, or trains, cargo insurance plays a role in mitigating the risks associated with trade transactions (Buy- Ship-Pay).

The cargo insurance process which is included in trade transactions plays one of the trade finance roles.



**Figure 4-1** Positioning the insurance process in BUY-SHIP-PAY model

**Table 4-1** Scope Description

<b>Categories</b>	<b>Description and Values</b>
Business Process	Cargo insurance process in a supply chain.
Product Classification	All
Industry Classification	All
Geopolitical	Global
Official Constraint	None
Business Process Role	Insurer, Assured, Insurance Intermediary, Transport Service Provider, Claim Agent, Surveyor
Supporting Role	Confirming Bank, Reimbursing Bank
System Capabilities	No limitation

This BRS covers the process and the information model for the application of a cargo insurance, the issuance of the insurance policy or the insurance certificate by the insurer, the claim notice by the assured and the settlement of the insurance payment.

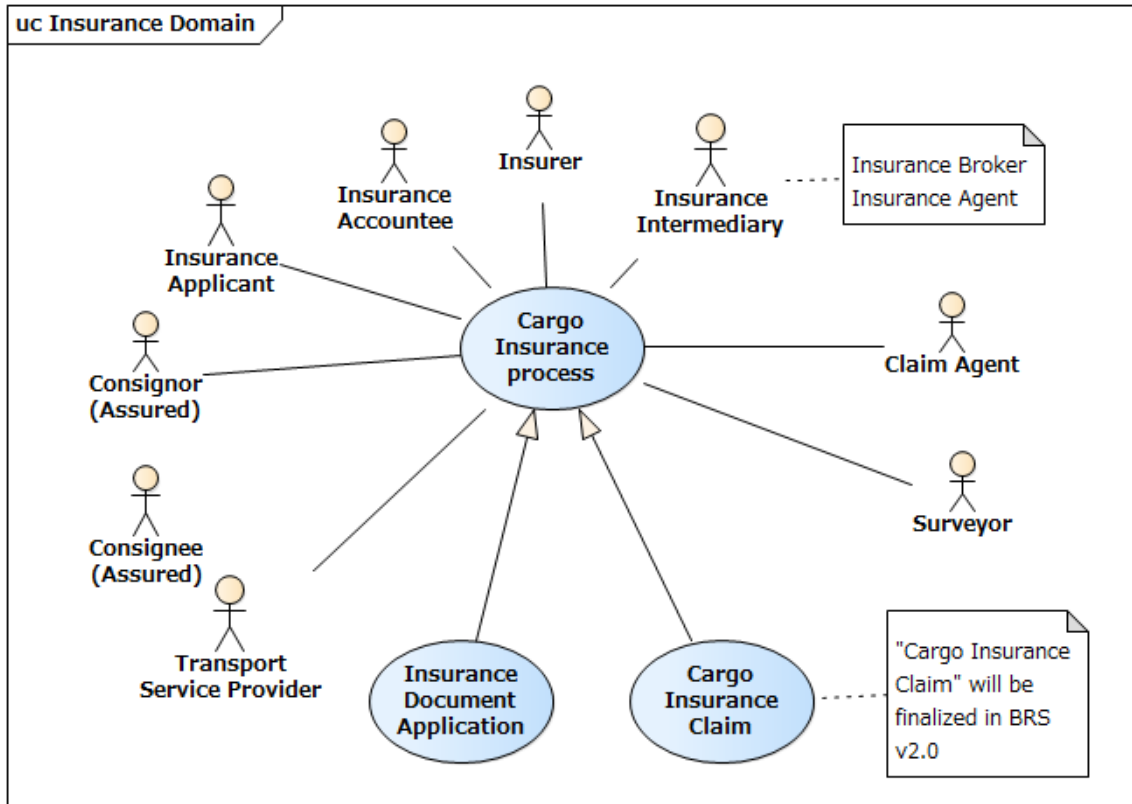
In particular, we would like to point out the necessary precautions to be taken if the insurance document is to be presented in use of a documentary credit.

In such situations it is necessary to consider Article 28 of the ICC UCP 600 (Insurance Document and Coverage) and in addition to what is prescribed therein, it is important to emphasize that if a documentary credit requires the presentation of a Certificate of Insurance, an Insurance Policy may be presented instead, whereas if the documentary credit requires an Insurance Policy, it cannot be replaced by an Insurance Certificate. This clarification seems necessary to avoid problems when using the Credit.

It seems appropriate to recall here that if the documentary credit requires that the insurance document be endorsed, this condition must be fulfilled, regardless of the legal system in which the document falls, which may not assign to it the qualification of a credit title and therefore does not require endorsement. In practice it is necessary that the provisions of the documentary credit, as always, must be complied with or its amendment must be requested.

## 5. Business Requirement View

### 5.1 Business Domain Use Case



**Figure 5.1-1** Business Domain Use Case

Note 1:

The following processes are defined in the documentary credit process.

- Submitting the insurance document to purchasing bank.
- Receiving the insurance document from the issuing bank.

Note 2:

The following process is defined in the regulatory process.

- Submitting the insurance document to Customs.

Note 3:

The cargo insurance claim process will be covered in the BRS v2.

## 5.2 Business Collaboration Use Case

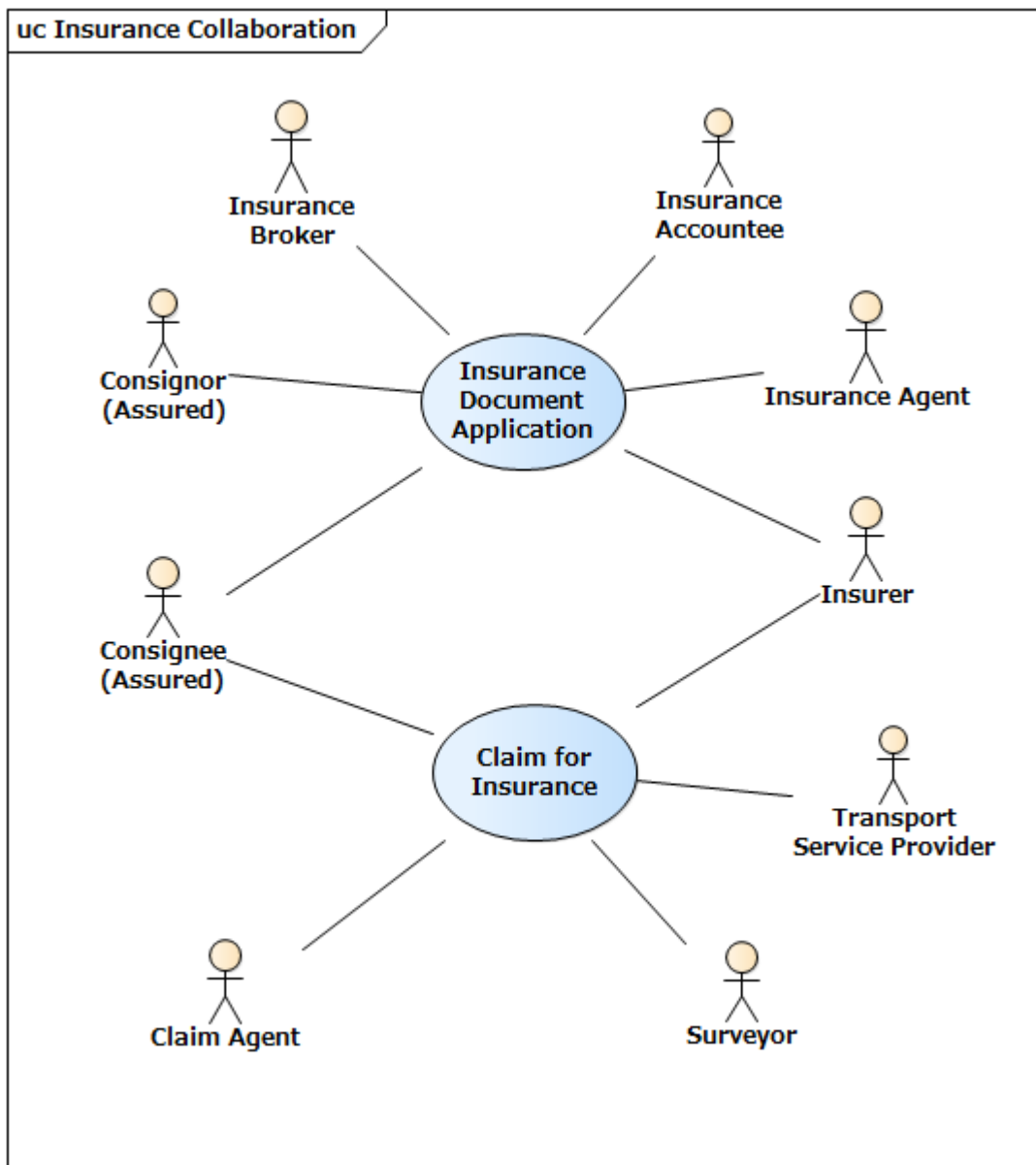


Figure 5.2-1 Business Collaboration Use Case



## 5.3 Use Case Description

### 5.3.1 Use Case Description

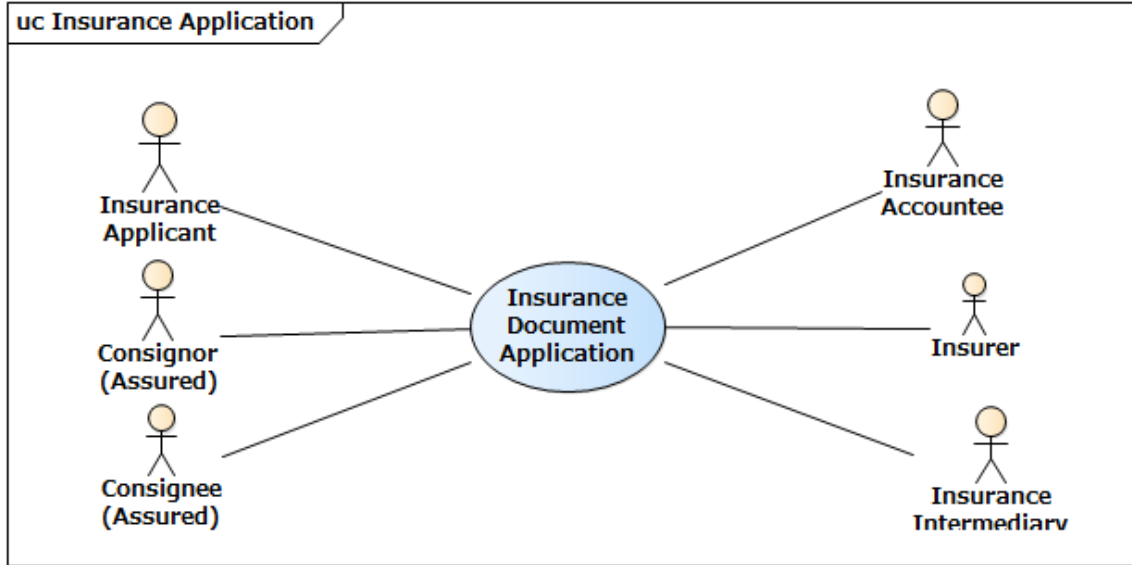
**Table 5.3-1** Business Domain Use Case Description

Category		Description
	Assured	An assured party insured by this insurance. The assured is the party who receives the financial protection or indemnity against specified risks, such as damage to a vessel or cargo during transit.
	Insurance Accountee	The party named in the insurance document to receive the benefits of the insurance coverage.
	Insurance Applicant	The party applies for an insurance document seeking to obtain insurance coverage. The consigner, the consignee, the insurance broker or the forwarder may become the applicant of the insurance.  *Note: Applicant is the party who open the documentary credit for the settlement of the trade (ICC UCP).
	Insurer	An insurer or insurers including coinsurer(s), also known as an insurance company, is a party who sells insurance policies in exchange for premiums. The insurer agrees to provide financial protection or reimbursement against specified risks in the insurance policy. When an assured experiences a covered loss or event, the insurer is responsible for paying out the agreed-upon benefits or compensation according to the terms of the policy.
	Insurance Intermediary	An insurance intermediary is a party that acts as a middleman between insurance buyers (policyholders) and insurance providers (insurers). There are two types of the intermediary, insurance broker on behalf of the assured and insurance agent on behalf of insurer or managing general agent.
	Claim Agent	A party who processes claims from an assured, conduct investigations, and manage the claims payment on behalf of the insurer.

	Surveyor	An independent party who investigates claims such as the damage or the loss.
	Transport Service Provider	A party that provides a transport service, such as carrier.
Use Case	Insurance Document Application	An insurance document application process for cargo insurance involves several steps, from gathering information about the shipment to obtaining coverage from an insurance provider, including issuance of an insurance document and payment of the insurance premium.
	Cargo Insurance Claim	An insurance claim is a formal request made by a policy holder or a certificate holder to an insurance company for payment or reimbursement of covered losses or damages according to the terms of an insurance policy or an insurance certificate. When an insured loss occurs, the assured submits a claim to the insurer to seek financial compensation for the resulting expenses or damages.

## 5.4 Business Process Elaboration

### 5.4.1 Insurance Document Application Business Process



**Figure 5.4.1-1** Insurance Document Application Business Process Use Case

**Table 5.4.1-1** Insurance Document Application Business Process Use Case Description

Category	Description
Business process name	Insurance Document application
Identifier	TF-IP-Application
Actors	<p>Insurance applicant who requests to issue an insurance document,                      Consignor who is an assured of this insurance document.</p> <p>Consignee who takes over the rights of assured.</p> <p>Insurance accountee who receives the benefits of the insurance coverage.</p> <p>Insurer who agrees to provide financial protection or reimbursement against specified risks in the insurance policy.</p> <p>Insurance intermediary who acts as an agent of the insurer or a broker of the assured.</p>
Pre-condition	A sales contract between the exporter (Seller) and the importer (Buyer) is in place.

Description	<p>An insurance document application process for cargo insurance involves following steps for insurance document issuance.</p> <ul style="list-style-type: none"> <li>- Prepare insurance application by the assured</li> <li>- Application submission to the insurer</li> <li>- Risk analysis and determine the premium by the insurer or coinsurer(s) through the coordination process, if any</li> <li>- Insurance premium payment by the assured</li> <li>- Insurance policy or certificate is issued by the insurer or the managing general agent”</li> </ul>
Post-condition	<p>Once the insurance policy or certificate has been issued, the risk determined in the insurance document are covered by this insurance. If Incoterms is CIP (Carriage and Insurance Paid to) or CIF (Cost, Insurance and Freight), the ownership of the insurance policy applied for by the consignor is transferred to the consignee.</p>

Note 1: There are several cases for billing and payment for insurance premium depend on the type of insurance contract, such as Open policy or individual insurance contract for a single voyage.

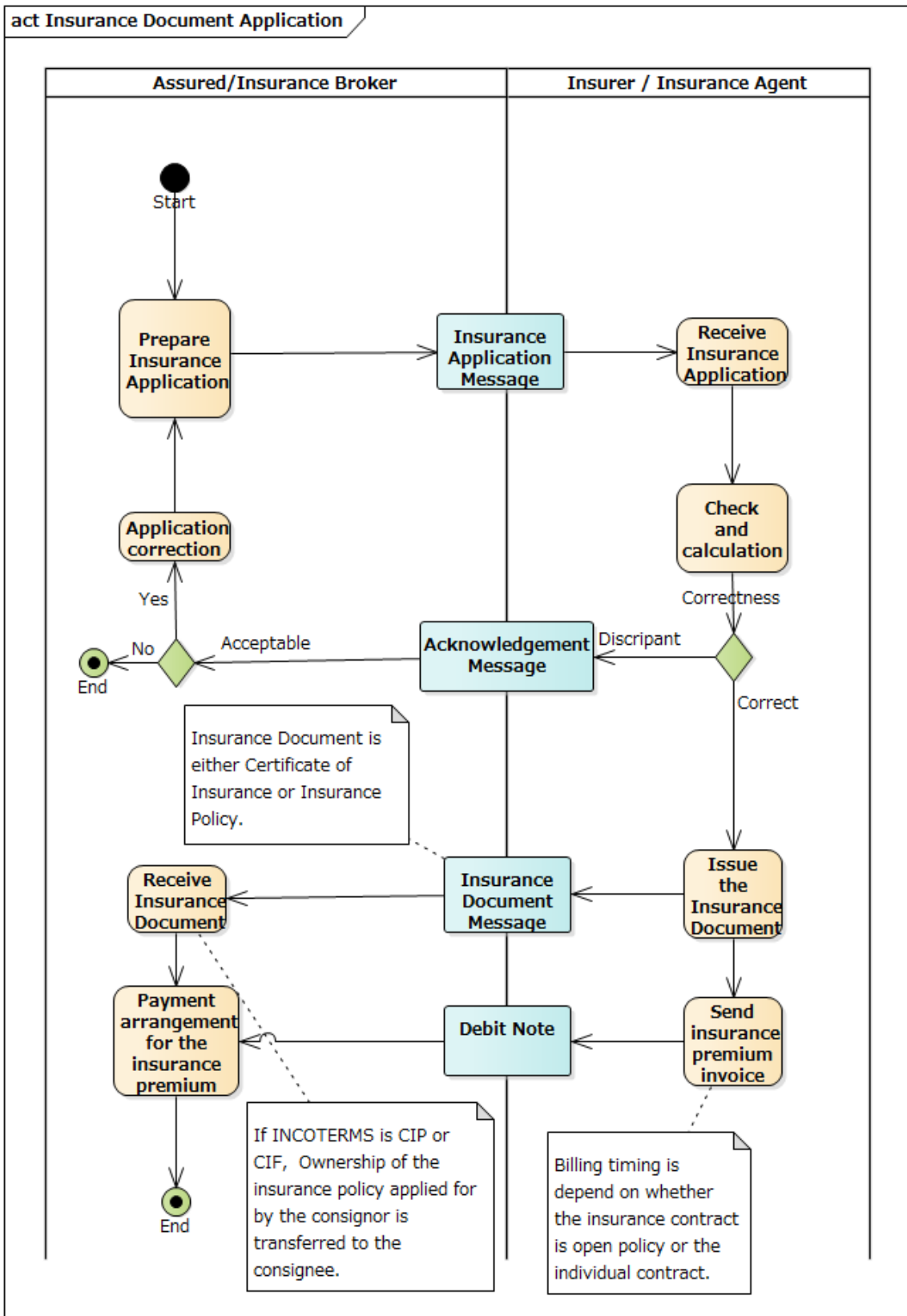
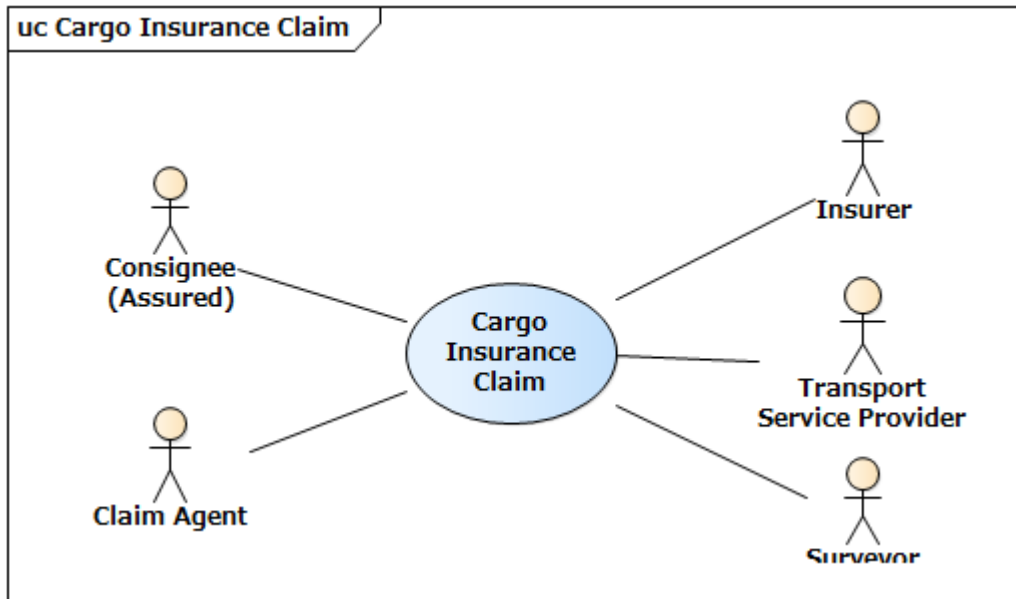


Figure 5.4.1-2 Insurance document Application Business Process Activity Diagram

## 5.4.2 Cargo Insurance Claim Business Process

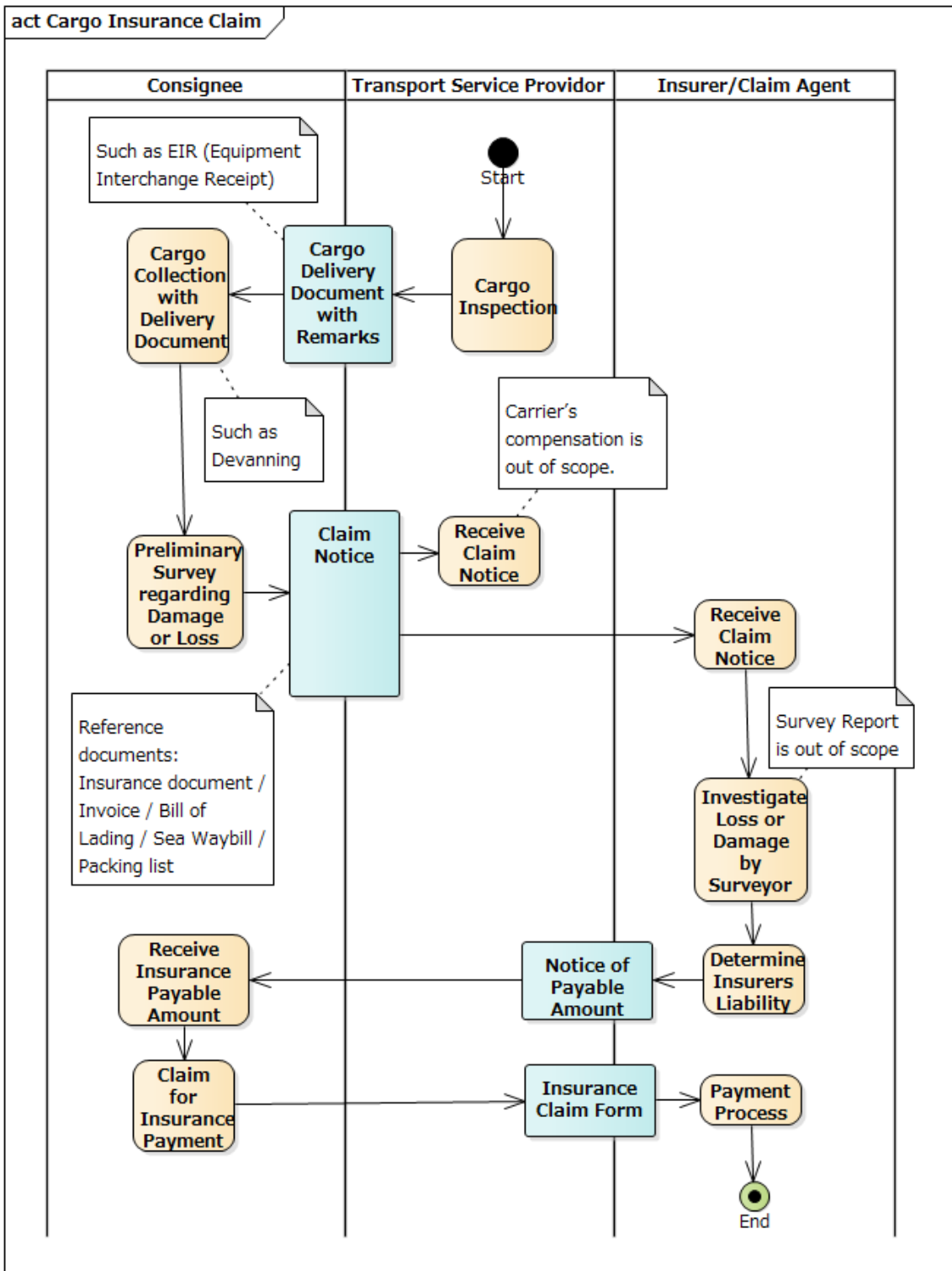


**Figure 5.4.2-1** Cargo Insurance Claim Business Process Use Case

**Table 5.4.2-1** Cargo Insurance Claim Business Process Use Case Description

Category	Description
Business process name	Cargo Insurance Claim
Identifier	TF-IP-Claim
Actors	<p>Consignee reports a claimable event and makes a claim for the insurance as an assured.</p> <p>Claim agent serves as the primary point of contact between the insurer and the assured during the claims process. The policy holder, broker or underwriter may also be involved as primary point of contact depending on where the claim is discovered.</p> <p>Insurer is a company that provides insurance coverage in exchange for the payment of premiums.</p> <p>Transport Service Provider is a company that offers transportation services such as an ocean carrier. The Transport Service Provider may be the party causing the damage.</p>

	Surveyor is an independent party who assesses and evaluates the extent of damage or loss incurred by an assured, typically related to property or assets covered by an insurance policy.
Pre-condition	There are several preconditions or requirements that assured typically need to fulfill. These preconditions may vary depending on the type of insurance and the terms outlined in the insurance policy.
Description	The consignee, surveyor adjuster or claim agent notifies the insurer as soon as possible after discovering damage or loss to the cargo with the referenced documents such as Insurance Policy, Invoice, Bill of Lading and Packing List. The insurer investigates damage or loss, sometimes using the surveyor, and determines the insurer's liability and notices the assured, who is the consignee, the payable amount of the insurance. The insurer also checks whether the claimant is entitled to claim reimbursement from the insurer. The insurer proceeds with the payment process according to the insurance claim form issued by the assured.
Post-condition	The insurance payment for the claim is ready.

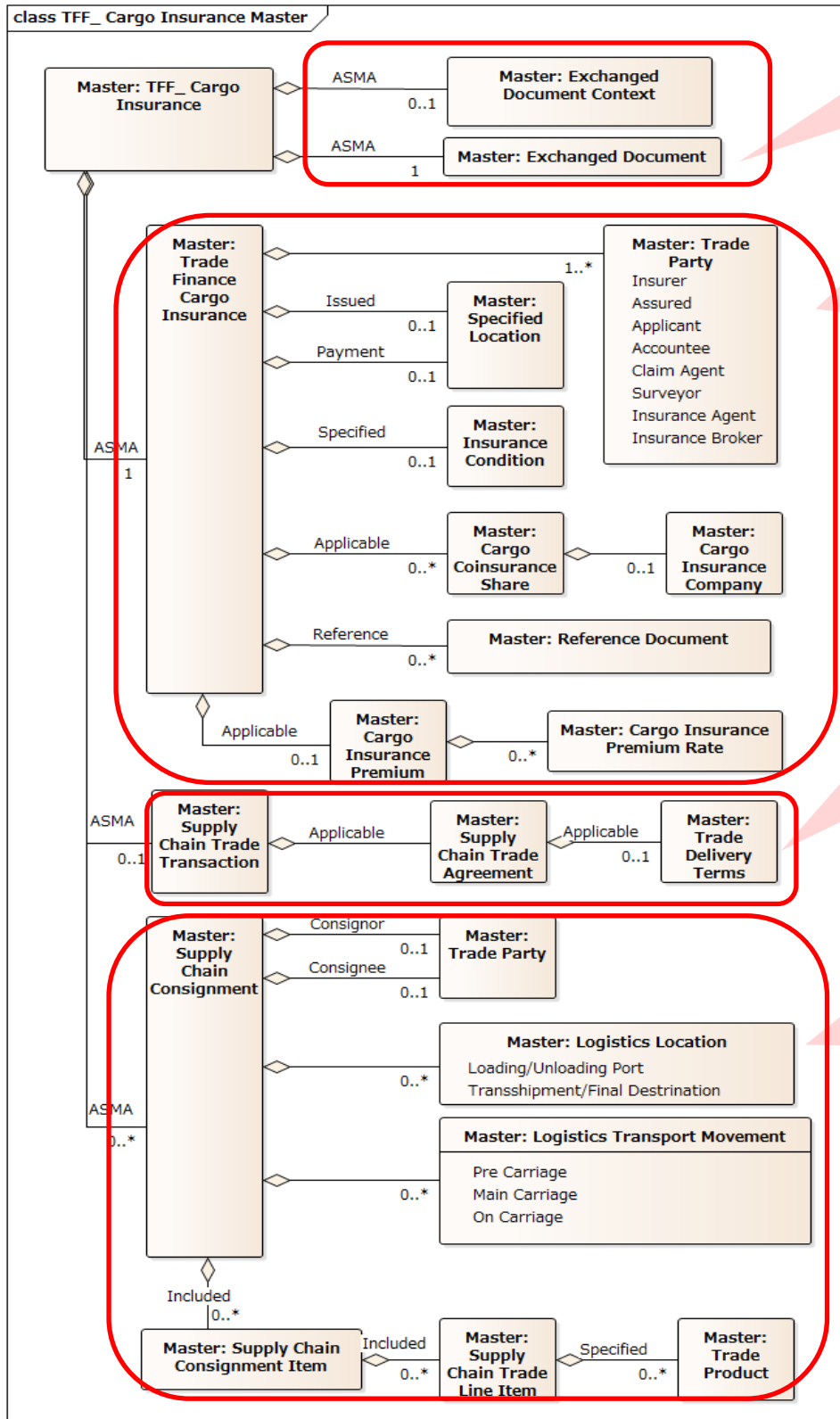


**Figure 5.4.2-2** Cargo Insurance Claim Business Process Activity Diagram



## 5.5 Information Model Definition

### 5.5.1 Business Entity Relationship Overview



Document Header  
=>Fig. 5.5.2-1

Cargo Insurance  
=>Fig. 5.5.2-2

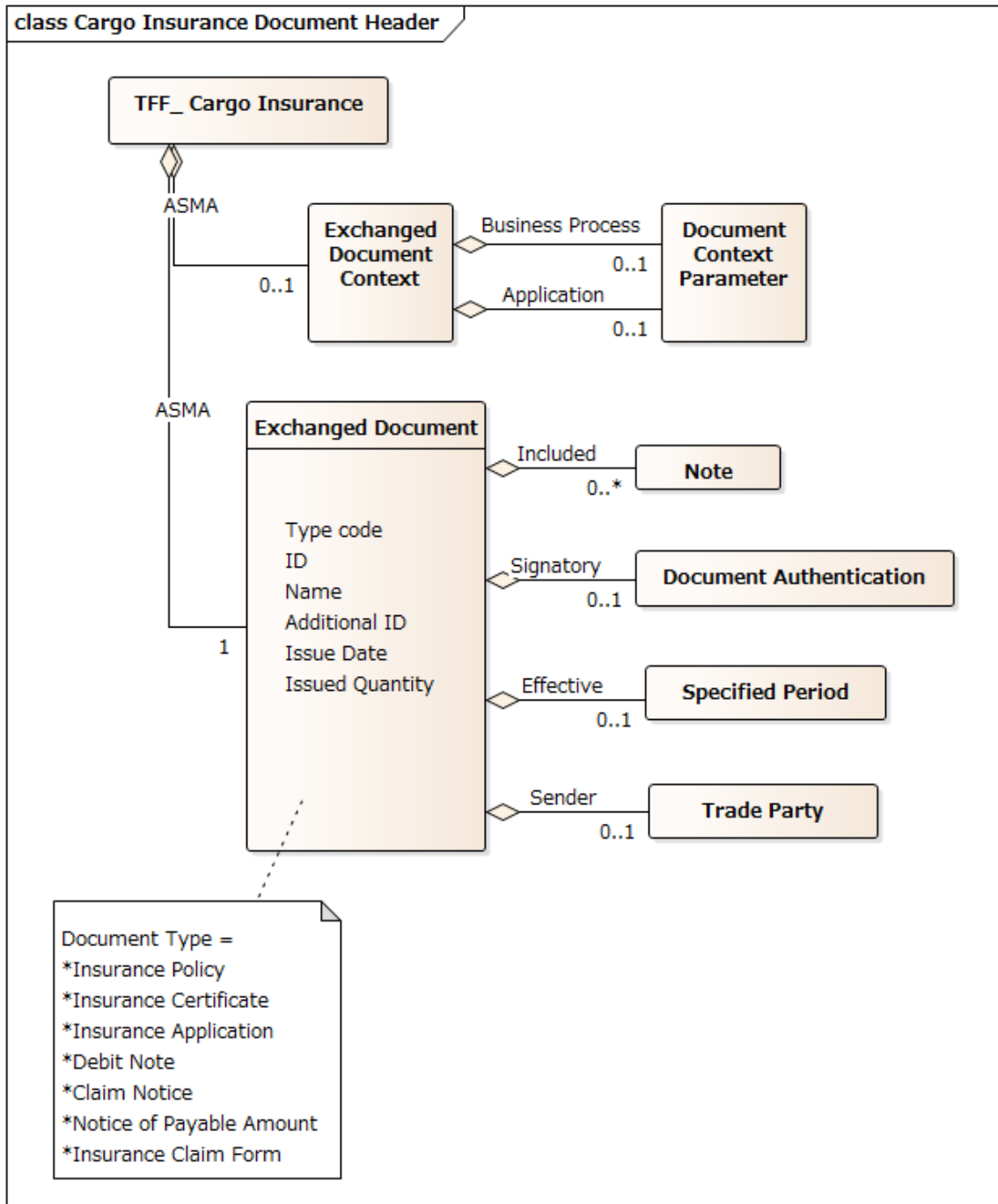
Supply Chain Trade Transaction  
=>Fig. 5.5.2-3

Supply Chain Consignment  
=>Fig. 5.5.2-4

**Figure 5.5.1-1 Business Entity Relationship**

5.5.2 Insurance Business Document

5.5.2.1 Document Header



**Figure 5.5.2-1 Document Header Class Diagram**

**Table 5.5.2-1 Document Header Business Information Entities**

Type	UID	Short Name	Definition	Cardinality
<b>Document Header Group</b>				
<b>ABIE</b>	<b>UN01003540</b>	<b>Exchanged Document Context</b>	<b>The scenario or setting of an exchanged document, such as its business process application context.</b>	
BBIE	UN01003541	Transaction ID	The identifier of a specified transaction in this exchanged document context.	1..1
BBIE	UN01012761	Processing Transaction Date Time	The date time of the processing of a transaction for this exchanged document context.	0..1
ASBIE	UN01003542	Business Process Parameter	A business process context parameter specified for this negotiation.	0..n
ASBIE	UN01003545	Application Parameter	An application context parameter specified for this exchanged document context.	0..n
<b>ABIE</b>	<b>UN01004852</b>	<b>Document Context Parameter</b>	<b>A feature that is fixed for a particular document context.</b>	
BBIE	UN01004853	ID	The unique identifier of this document context parameter.	0..1
BBIE	UN01004854	Value Text	The value, expressed as text, of this document context parameter.	0..1
<b>ABIE</b>	<b>UN01002487</b>	<b>Exchanged Document</b>	<b>A collection of data for a piece of written, printed or electronic matter that is exchanged between two or more parties.</b>	
BBIE	UN01002488	Document ID	The identifier of this exchanged document, such as the Document Credit Number (MT700).	0..1
BBIE	UN01002489	Document Name	The name, expressed as text, of this exchanged document.	0..1
BBIE	UN01002491	Type Code	The code specifying the type of exchanged document, such as Insurance Policy, Insurance Certificate, Insurance Application, Debit Note, Claim Notice, Notice of Payable Amount, Insurance Claim Form.	0..1
BBIE	UN01002493	Issue Date Time	The date, time, date time or other date time value for the issuance of this exchanged document.	0..1
BBIE	UN01003559	Original Issued Quantity	The number of originals issued of this exchanged document.	0..1
BBIE	UN01013312	Additional ID	An additional identifier of this exchanged document.	0..n
BBIE	TF_DC23002	Transferable Indicator	The indication of whether or not this exchanged document is transferable.	0..1

Type	UID	Short Name	Definition	Cardinality
ASBIE	UN01002499	Signatory Document Authentication	A signatory document authentication for this exchanged document.	0..n
<b>ABIE</b>	<b>UN01002639</b>	<b>Document Authentication</b>	<b>A proof that a document is genuine.</b>	
BBIE	UN01002640	Document Authentication Type Code	The code specifying the type of document authentication.	0..1
BBIE	UN01003520	Document Authentication ID	The identifier for this document authentication.	0..1
BBIE	UN01012687	Signatory Image	The signatory image, expressed as a binary object, for this document authentication.	0..1
BBIE	UN01006191	Signatory	The signatory, expressed as text, for this document authentication.	0..1
ASBIE	UN01003578	Effective Period	The specified period within which this exchanged document is effective.	0..1
<b>ABIE</b>	<b>UN01001270</b>	<b>Period</b>	<b>A specified period of time.</b>	
BBIE	UN01001274	Start Date Time	The date, time, date time or other date time value for the start of this specified period of time.	0..1
BBIE	UN01001275	End Date Time	The date, time, date time or other date time value for the end of this specified period of time.	0..1
ASBIE	UN01002497	Included Note	A note included in this exchanged document.	0..n
<b>ABIE</b>	<b>UN01002519</b>	<b>Note</b>	<b>A textual or coded description, such as a remark or additional information.</b>	
BBIE	UN01002520	Subject	The subject, expressed as text, of this note.	0..1
BBIE	UN01002522	Note Content	The content, expressed as text, of this note.	0..1
ASBIE	UN01003587	Sender Trade Party	The party that sends this exchanged document.	0..1
<b>ABIE</b>	<b>UN01004594</b>	<b>Trade Party</b>	<b>An individual, a group, or a body having a role in a trade business function.</b>	
BBIE	UN01004595	ID	An identifier of this trade party.	0..1
BBIE	UN01004598	Name	A name, expressed as text, for this trade party.	0..1

### 5.5.2.2 Trade Finance Cargo Insurance

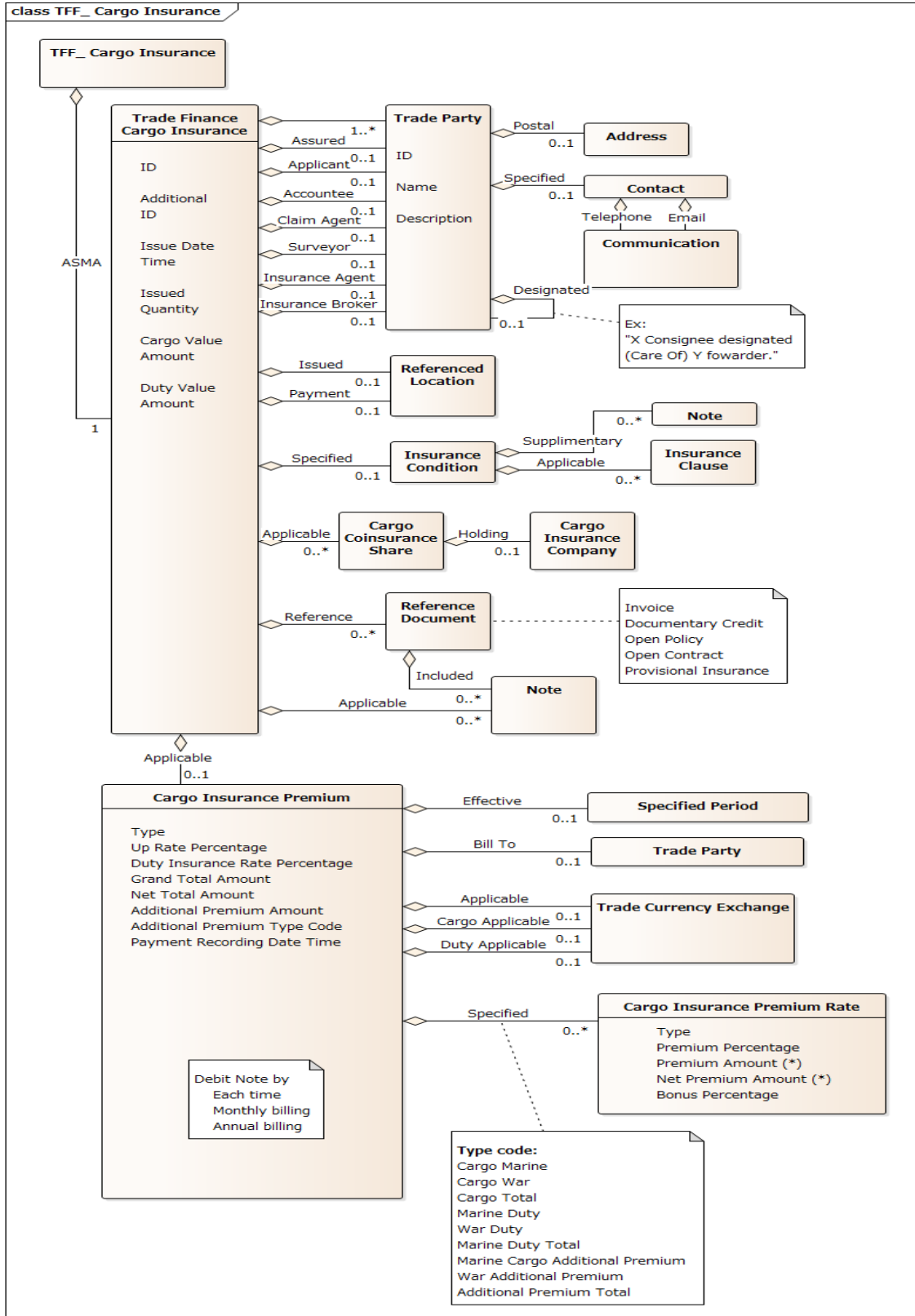


Figure 5.5.2-2 Trade Finance Cargo Insurance Class Diagram

**Table 5.5.2-2 Trade Finance Cargo Insurance Business Information Entities**

Type	UID	Short Name	Definition	Cardinality
<b>Trade Finance Cargo Insurance</b>				
<b>ABIE</b>	<b>TF_IP24001</b>	<b>Trade Finance Cargo Insurance</b>	<b>A cargo insurance is a type of insurance that protects the owner's financial interests in goods, merchandise, or commodities while they are in transit from one location to another.</b>	
BBIE	TF_IP24065	ID	An identifier of this trade finance cargo insurance.	0..1
BBIE	TF_IP24066	Additional ID	The additional identifier of this trade finance cargo insurance.	0..1
BBIE	TF_IP24058	Issue Date Time	The date, time, date time or other date time value for the issuance of this trade finance cargo insurance.	0..1
BBIE	TF_IP24059	Issued Quantity	The number of cargo insurance policy issued of this trade finance.	0..1
BBIE	TF_IP24055	Cargo Value Amount	The monetary value of this supply chain consignment as covered by a cargo insurance.	0..1
BBIE	TF_IP24056	Duty Value Amount	The monetary value of this supply chain consignment as covered by an duty insurance.	0..1
ASBIE	TF_IP24002	Trade Finance Accountee Trade Party	The trade finance accountee party who opens the documentary credit for this trade finance cargo insurance.	0..1
ASBIE	TF_IP24003	Insurer Trade Party	The insurer is a trade party who undertakes the risk and provides the financial protection or reimbursement against specified risks in the insurance policy in exchange for premiums for this trade finance cargo insurance.	0..1
ASBIE	TF_IP24004	Insurance Assured Trade Party	The insurance assured is a trade party who is insured by this trade finance cargo insurance.	0..1
ASBIE	TF_IP24005	Insurance Applicant Trade Party	The trade party applying insurance for this trade finance cargo insurance.	0..1
ASBIE	TF_IP24006	Insurance Claim Agent Trade Party	The trade party who processes claims from an assured on behalf of the insurer for this trade finance cargo insurance.	0..1
ASBIE	TF_IP24007	Insurance Surveyor Trade Party	The trade party who investigates claims for this trade finance cargo insurance.	0..1
ASBIE	TF_IP24008	Insurance Agent Trade Party	The trade party who works on behalf of the insurer for this trade finance cargo insurance.	0..1
ASBIE	TF_IP24009	Insurance Broker Trade Party	The trade party who works on behalf of the assured for this trade finance cargo insurance.	0..1
<b>ABIE</b>	<b>UN01004594</b>	<b>Trade Party</b>	<b>An individual, a group, or a body having a role in a trade business function.</b>	
BBIE	UN01004595	ID	The identifier of this trade party.	0..1
BBIE	TF_DC23021	LEI ID	The Legal Entity Identifier (LEI) of this trade party.	0..1
BBIE	UN01004598	Name	The name, expressed as text, for this trade party.	0..1
BBIE	UN01010146	Descripton	A textual description of this trade party.	0..1

Type	UID	Short Name	Definition	Cardinality
ASBIE	TF_IP24010	Designated Specified Party	The designated party for this trade party.	0..1
ABIE	UN01007608	Specified Party	A specified individual, group, or body having a role in a business function.	
BBIE	UN01007609	ID	The identifier of the specified party.	0..1
BBIE	TF_IP24054	LEI ID	The legal entity Identification (LEI) of this specified party.	0..1
BBIE	UN01007610	Name	The name, expressed as text, for this specified party.	0..1
ASBIE	UN01004602	Trade Party Trade Contact	A trade contact defined for this trade party.	0..n
ABIE	UN01001640	Trade Contact	<b>A person or a department that acts as a point of contact with another person or department in a trading relationship.</b>	
BBIE	UN01001641	ID	The identifier for this trade contact.	0..1
BBIE	UN01001642	Person Name	The name, expressed as text, of this trade contact person.	0..1
ASBIE	UN01004564	Telephone Communication	Telephone communication information for this trade contact.	0..1
ASBIE	UN01004569	Email URI Communication	The email URI communication information for this trade contact.	0..1
ABIE	UN01001252	Universal Communication	<b>The exchange of thoughts, messages, or information, as universally exchanged by speech, signals, writing, or behaviour between persons and/or organizations.</b>	
BBIE	UN01001256	Complete Number	The text string of characters that make up the complete number for this universal communication.	0..1
BBIE	UN01015468	Email URI	The Uniform Resource Identifier (URI) of the email for this universal communication.	0..1
ASBIE	UN01004603	Postal Trade Address	The postal address for this trade address.	0..1
ABIE	UN01004533	Trade Address	The location at which a particular trade related organization or person may be found or reached.	
BBIE	UN01004535	Post Code	A code specifying the postcode of this trade address.	0..1
BBIE	UN01004538	Line One	The first free form line, expressed as text, of this trade address.	0..1

Type	UID	Short Name	Definition	Cardinality
ASBIE	TF_IP24049	Issued Referenced Location	The referenced location where the insurance document is issued for this trade finance cargo insurance.	0..1
ASBIE	TF_IP24050	Payment Referenced Location	The referenced location where the insurance payment are made for this trade finance cargo insurance.	0..1
ABIE	UN01002558	Referenced Location	A reference to a physical location or place.	
BBIE	UN01002559	ID	An identifier for this referenced location	0..n
BBIE	UN01002560	Name	The name, expressed as text, of this referenced location.	0..1
BBIE	UN01014245	Country Name	The country name, expressed as text, of this referenced location.	0..1
ASBIE	TF_IP24011	Specified Insurance Condition	The insurance condition specified for this trade finance cargo insurance.	0..1
ABIE	TF_IP24053	Insurance Condition	An insurance condition is a provision within an insurance policy that sets forth specific requirements or actions that the policyholder must meet or perform in order for the coverage to be valid and for claims to be honored.	0..1
BBIE	TF_IP24012	ICC ID	The institute Cargo Clauses (ICC) condition identifier.	0..1
BBIE	TF_IP24060	ICC Basic Condition	The basic condition, expressed as text, defined in the institute Cargo Clauses (ICC).	0..1
ASBIE	TF_IP24013	Applicable Insurance Clause	An insurance clause applicable to this insurance condition.	0..n
ABIE	TF_IP24014	Insurance Clause	A distinct article which requires compliance for the insurance.	
BBIE	TF_IP24015	ID	The identification of the clause for the insurance.	0..1
BBIE	TF_IP24016	Type Code	The code specifying the type of the insurance clause , such as War Clause, Strikes Clause.	0..1
BBIE	TF_IP24017	Content Text	A content, expressed as text, of the clause for the insurance.	0..n
ASBIE	TF_IP24057	Supplementary Note	A supplementary note for this insurance condition.	0..n
ABIE	UN01002519	Note	A textual or coded description, such as a remark or additional information.	
BBIE	UN01002520	Subject	The subject, expressed as text, of this note.	0..1
BBIE	UN01002522	Content	The content, expressed as text, of this note.	0..1



Type	UID	Short Name	Definition	Cardinality
ASBIE	TF_IP24018	Applicable Cargo Coinsurance Share	A cargo coinsurance share applicable to this trade finance cargo insurance.	0..n
ABIE	TF_IP24019	Cargo Coinsurance Share	A share of coverage provided by a single coinsurer or coinsurance agent if the insurance is not provided by a single insurer for the cargo insurance.	
BBIE	TF_IP24020	Provided Percent	The percentage share of coinsurance provided by the coinsurer or coinsurance agent for this cargo insurance.	0..1
BBIE	TF_IP24020	Effective Date Time	The date, time, date time, or other date time value when this coinsurance share became or is to become effective for this cargo insurance.	0..1
BBIE	TF_IP24021	Lead Indicator	The indication of whether or not this coinsurance share is the lead coinsurance share for this cargo insurance.	0..1
ASBIE	TF_IP24022	Holding Cargo Insurance Company	The insurance company holding this coinsurance share for this cargo insurance.	0..1
ABIE	TF_IP24023	Cargo Insurance Company	An organization that undertakes, on receipt of a premium, to secure a party against a financial loss by payment, such as in the event of loss or damage for this cargo insurance.	
BBIE	TF_IP24024	ID	The identifier for the cargo insurance company.	0..1
BBIE	TF_IP24051	Name	The name, expressed as text, of the cargo insurance company.	0..1
BBIE	TF_IP24052	Country Name	The country name, expressed as text, of the cargo insurance company.	0..1
ASBIE	TF_IP24025	Reference Referenced Document	A referenced document for this trade finance cargo insurance.	0..n
<b>ABIE</b>	<b>UN01001569</b>	<b>Referenced Document</b>	<b>Written, printed or electronic matter that is referenced.</b>	
BBIE	UN01001577	Type Code	The code specifying the type of referenced document, Such as Invoice, Documentary Credit, Open Policy, Open Contract, Provisional Inmsurance.	0..1
BBIE	UN01003991	ID	The identifier for the referenced document.	0..1
BBIE	UN01004002	Original Required Quantity	The number of originals required of the referenced document.	0..1
BBIE	UN01004003	Copy Required Quantity	The number of copies required of the referenced document.	0..1
BBIE	UN01010566	Description	The textual description for this referenced document.	0..1

Type	UID	Short Name	Definition	Cardinality
ASBIE	UN01004016	Issuer Trade Party	The trade related party that issues this referenced document.	0..1
ABIE	UN01004594	Trade Party	An individual, a group, or a body having a role in a trade business function.	
BBIE	UN01004595	ID	The identifier of this trade party.	0..1
BBIE	UN01004598	Name	The name, expressed as text, for this trade party.	0..1
ASBIE	UN01012756	Included Note	A note included in this referenced document.	0..n
ABIE	UN01002519	Note	<b>A textual or coded description, such as a remark or additional information.</b>	
BBIE	UN01002522	Content	The content, expressed as text, of this note.	0..1
ASBIE	TF_IP24026	Applicable Note	A note applicable to this trade finance cargo insurance.	0..n
ABIE	UN01002519	Note	<b>A textual or coded description, such as a remark or additional information.</b>	
BBIE	UN01002520	Subject	The subject, expressed as text, of this note.	0..1
BBIE	UN01002522	Content	The content, expressed as text, of this note.	0..1
ASBIE	TF_IP24027	Applicable Cargo Insurance Premium	The cargo insurance applicable to this trade finance cargo insurance.	0..1
ABIE	TF_IP24028	Cargo Insurance Premium	A cargo insurance premium is the amount payable for a contract of the insurance.	
BBIE	TF_IP24029	Type Code	The type of the debit note for the cargo insurance premium, such as Each time billing, Monthly billing or Annual billing.	0..1
BBIE	TF_IP24030	Increase Percentage	The increase percentage against cargo amount insured.	0..1
BBIE	TF_IP24031	Duty Insurance Rate Percentage	The percentage against the cargo amount to determine the duty insurance amount.	0..1
BBIE	TF_IP24032	Grand Total Amount	A monetary value of a grand total for the cargo insurance premium.	0..n
BBIE	TF_IP24033	Net Total Amount	A monetary value of a net total for the cargo insurance premium.	0..n
BBIE	TF_IP24034	Additional Premium Amount	A monetary value which is additional for the cargo insurance premium.	0..n
BBIE	TF_IP24035	Additional Premium Type Code	The code specifying the type of the additional premium for the cargo insurance premium.	0..1
BBIE	TF_IP24039	Minimum Amount	The minimum amount for this cargo insurance premium.	0..1
BBIE	TF_IP24036	Payment Recording Date Time	The date, time, date time, or other date time value of the payment recording for the cargo insurance premium.	0..1

Type	UID	Short Name	Definition	Cardinality
ASBIE	TF_IP24037	Effective Specified Period	The specified period applicable to this cargo insurance premium.	0..1
ABIE	UN01001270	Specified Period	A specified period of time.	
BBIE	UN01001274	Start Date Time	The date, time, date time or other date time value for the start of this specified period of time.	0..1
BBIE	UN01001275	End Date Time	The date, time, date time or other date time value for the end of this specified period of time.	0..1
ASBIE	TF_IP24068	Payer Trade Party	The payer party for this cargo insurance premium.	0..1
ABIE	UN01004594	Trade Party	An individual, a group, or a body having a role in a trade business function.	
BBIE	UN01004595	ID	An identifier of this trade party.	0..1
BBIE	UN01004598	Name	A name, expressed as text, for this trade party.	0..1
ASBIE	TF_IP24069	Applicable Trade Currency Exchange	The currency exchange applicable to the insurance for this cargo insurance premium.	0..1
ASBIE	TF_IP24070	Cargo Applicable Trade Currency Exchange	The currency exchange applicable to the cargo insurance for this cargo insurance premium.	0..1
ASBIE	TF_IP24071	Duty Applicable Trade Currency Exchange	The currency exchange applicable to the duty insurance for this cargo insurance premium.	0..1
ABIE	UN01004576	Trade Currency Exchange	The conversion of one currency to another for trade purposes.	
BBIE	UN01004577	Source Currency Code	The code specifying the source currency of a trade related currency conversion.	0..1
BBIE	UN01004579	Target Currency Code	The code specifying the target currency of a trade related currency conversion.	0..1
BBIE	UN01004582	Conversion Rate	The rate factor used for conversion from the source currency to the target currency for trade purposes.	0..1
BBIE	UN01004583	Conversion Rate Date Time	The date, time, date time or other date time value of the conversion rate for this trade related currency exchange.	0..1

Type	UID	Short Name	Definition	Cardinality
ASBIE	TF_IP24042	Specified Cargo Insurance Premium Rate	A specified rate for this cargo insurance premium.	0..n
ABIE	TF_IP24043	Cargo Insurance Premium Rate	A percentage applied against the insured amount.	
BBIE	TF_IP24044	Type Code	The code specifying the type of the cargo insurance premium rate, such as Cargo Marine, Cargo War, Cargo Total, Marine Duty, War Duty, Marine Duty Total, Marine Cargo Additional Premium, War Additional Premium, Additional Premium Total.	0..1
BBIE	TF_IP24045	Premium Percentage	The percentage of this cargo insurance premium.	0..1
BBIE	TF_IP24046	Premium Amount	A monetary value of this cargo insurance premium.	0..n
BBIE	TF_IP24047	Net Premium Amount	A monetary value of this net cargo insurance premium.	0..n
BBIE	TF_IP24048	Bonus Percentage	The percentage of the bonus for this cargo insurance premium.	0..1

### 5.5.2.3 Supply Chain Trade Transaction

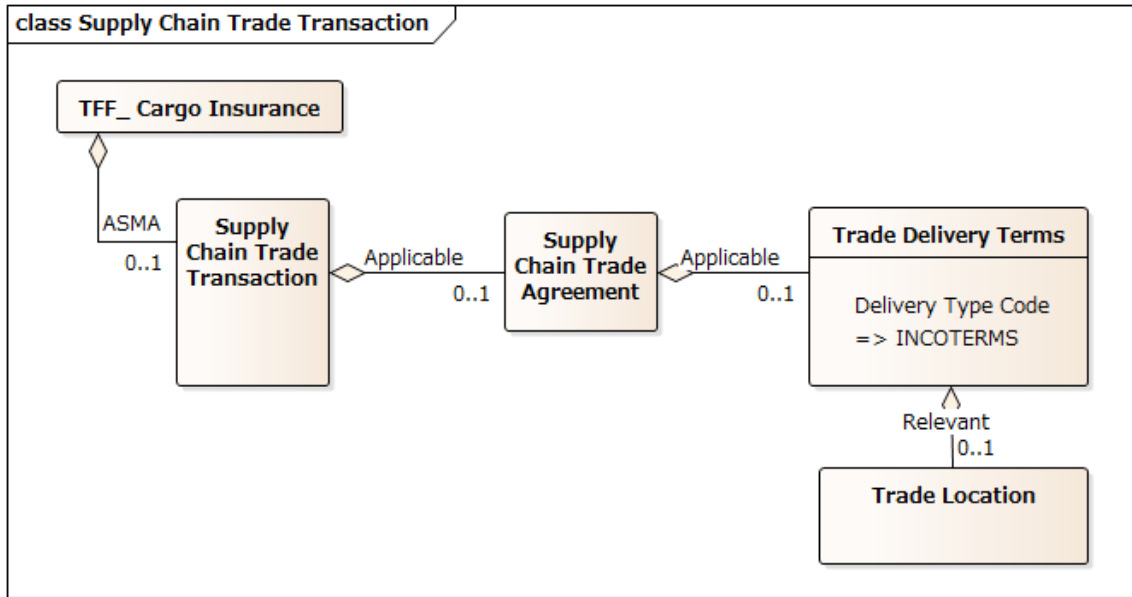
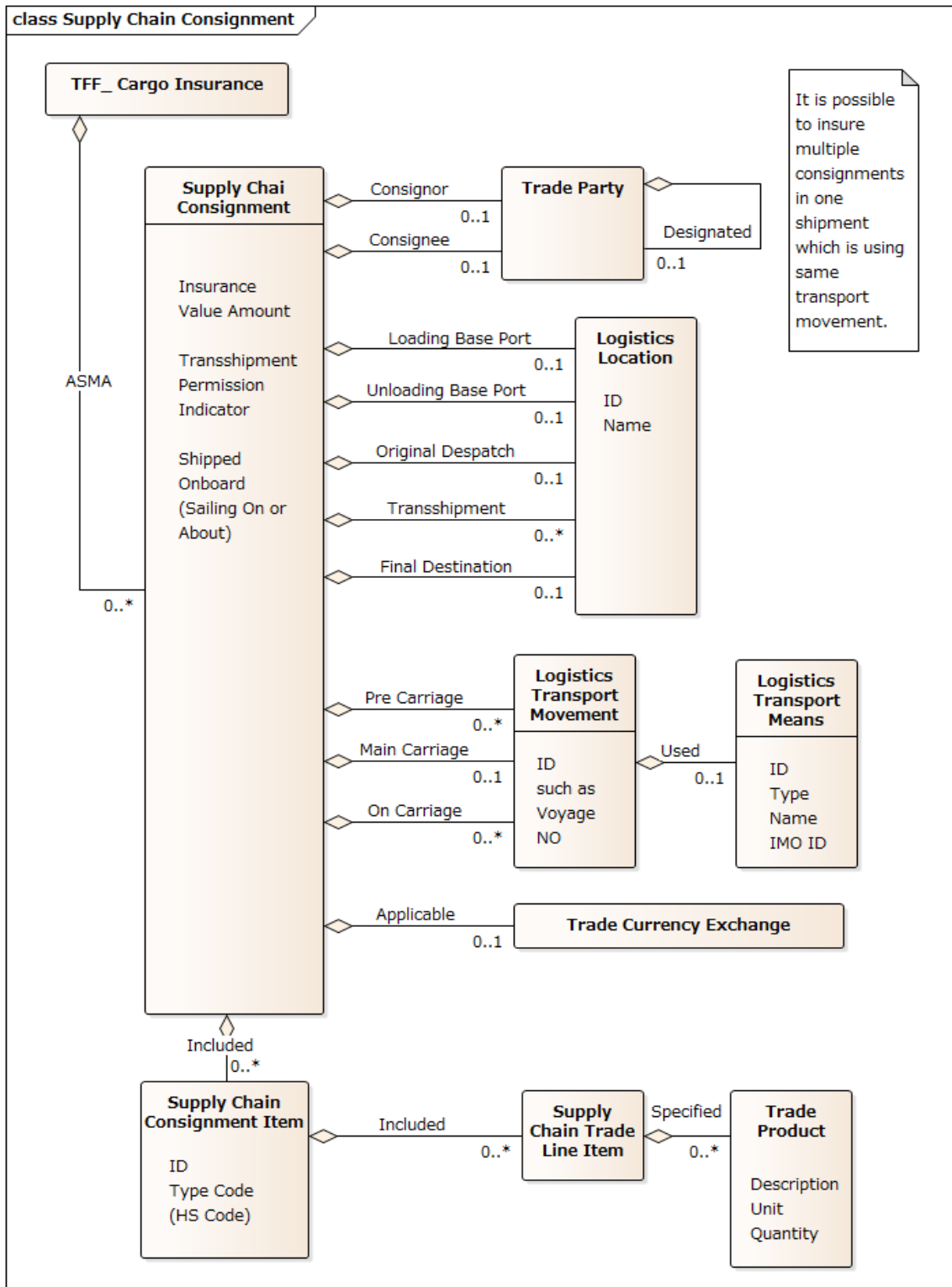


Figure 5.5.2-3 Supply Chain Trade Transaction Information Entity

**Table 5.5.2-3 Supply Chain Trade Transaction Information Entities**

Type	UID	Short Name	Definition	Cardinality
<b>Supply Chain Trade Transaction</b>				
*This spread sheet shows a sample data model of Supply Chain Trade Transaction.				
*The full set of the data model can be referred in SCRDM.				
<b>ABIE</b>	<b>UN01004475</b>	<b>Supply Chain Trade Transaction</b>	<b>A group of supply chain trade line items, trade agreement, trade delivery and trade settlement details.</b>	
ASBIE	UN01004482	Applicable Supply Chain Trade Agreement	The trade agreement applicable to this supply chain trade transaction, such as payment or delivery terms.	0..1
<b>ABIE</b>	<b>UN01004333</b>	<b>Supply Chain Trade Agreement</b>	<b>The contractual terms of a supply chain trade agreement.</b>	
ASBIE	UN01004347	Applicable Trade Delivery Terms	The terms of delivery applicable to this supply chain trade agreement.	0..1
<b>ABIE</b>	<b>UN01001654</b>	<b>Trade Delivery Terms</b>	<b>Conditions agreed upon between the parties with regard to the delivery of goods and or services for trade purposes.</b>	
BBIE	UN01001655	Delivery Type Code	The code specifying the type of delivery for these trade delivery terms, such as International Commercial Terms (Incoterms).	0..1
BBIE	UN01001656	Description	The textual description of these trade delivery terms.	0..1
ASBIE	UN01001657	Relevant Trade Location	The trade location relevant for these trade delivery terms.	0..1
<b>ABIE</b>	<b>UN01001658</b>	<b>Trade Location</b>	<b>A physical location or place used or referenced for trade purposes.</b>	
BBIE	UN01001661	ID	The identifier for this location used or referenced in trade.	0..1
BBIE	UN01001662	Name	The name, expressed as text, of this location used or referenced in trade.	0..1

### 5.5.2.4 Supply Chain Consignment



**Figure 5.5.2-4** Supply Chain Consignment Class Diagram

**Table 5.5.2-4 Supply Chain Consignment Business Information Entities**

Type	UID	Short Name	Definition	Cardinality
<b>Supply Chain Consignment</b>				
*This spread sheet shows a sample data model of Supply Chain Consignment.				
*The full set of the data model can be referred in MMTRDM.				
<b>ABIE</b>	<b>UN01004159</b>	<b>Supply Chain Consignment</b>	<b>A separately identifiable collection of goods items to be transported or available to be transported from one consignor to one consignee in a supply chain via one or more modes of transport where each consignment is the subject of one single transport contract.</b>	
BBIE	UN01004179	Insurance Value Amount	The monetary value of this supply chain consignment as covered by an insurance policy.	0..1
BBIE	UN01012579	Transshipment Permission Indicator	The indication of whether or not transshipment is permitted for this supply chain consignment.	0..1
BBIE	UN01015089	Shipped Onboard Date Time	A date, time, date time, or other date time value when this supply chain consignment is shipped onboard.	0..1
ASBIE	UN01004212	Consignor Trade Party	The consignor party for this supply chain consignment.	0..1
ASBIE	UN01004213	Consignee Trade Party	The consignee party for this supply chain consignment.	0..1
<b>ABIE</b>	<b>UN01004594</b>	<b>Trade Party</b>	<b>An individual, a group, or a body having a role in a trade business function.</b>	
BBIE	UN01004595	ID	The identifier of this trade party.	0..1
BBIE	TF_DC23021	LEI ID	The Legal Entity Identifier (LEI) of this trade party.	0..1
BBIE	UN01004598	Name	The name, expressed as text, for this trade party.	0..1
ASBIE	UN01004236	Transshipment Logistics Location	A transshipment location for this supply chain consignment.	0..n
ASBIE	UN01004238	Loading Base Port Logistics Location	The baseport location at which this supply chain consignment is to be loaded on a means of transport according to the transport contract.	0..1
ASBIE	UN01004239	Unloading Base Port Logistics Location	The baseport location at which this supply chain consignment is to be unloaded from a means of transport according to the transport contract.	0..1
ASBIE	UN01004242	Final Destination Logistics Location	The final destination location for this supply chain consignment.	0..1
ASBIE	UN01015093	Original Despatch Logistics Location	The location from which this supply chain consignment was originally despatched.	0..1



Type	UID	Short Name	Definition	Cardinality
<b>ABIE</b>	<b>UN01003679</b>	<b>Logistics Location</b>	<b>A logistics related physical location or place.</b>	
BBIE	UN01003680	ID	The unique identifier for this logistics related location.	0..1
BBIE	UN01003681	Name	The name, expressed as text, of this logistics related location.	0..1
ASBIE	UN01004261	Main Carriage Logistics Transport Movement	The main carriage logistics transport movement for this supply chain consignment.	0..1
ASBIE	UN01004262	Pre Carriage Logistics Transport Movement	A pre-carriage logistics transport movement for this supply chain consignment.	0..n
ASBIE	UN01004263	Pre Carriage Logistics Transport Movement	An on-carriage logistics transport movement for this supply chain consignment.	0..n
<b>ABIE</b>	<b>UN01003837</b>	<b>Logistics Transport Movement</b>	<b>The conveyance (physical carriage) of goods or other objects used for logistics transport purposes.</b>	
BBIE	UN01003841	ID	The identifier for this logistics transport movement, such as a voyage number, flight number, or trip number.	0..1
ASBIE	UN01003861	Used Logistics Transport Means	The means of transport used for this logistics transport movement.	0..1
<b>ABIE</b>	<b>UN01003819</b>	<b>Logistics Transport Means</b>	<b>The devices used to convey goods or other objects from place to place during logistics cargo movements.</b>	
BBIE	UN01003820	Type Code	The code specifying the type of logistics means of transport (Reference UNECE Recommendation 28).	0..1
BBIE	UN01003822	ID	The identifier of this logistics means of transport, such as the International Maritime Organization number of a vessel.	0..1
BBIE	UN01003823	Name Text	The name, expressed as text, of this logistics means of transport.	0..1
BBIE	UN01015569	IMO ID	The IMO (International Maritime Organization) identifier for this logistics transport means.	0..1

Type	UID	Short Name	Definition	Cardinality
ASBIE	UN01004258	Included Supply Chain Consignment Item	A consignment item included in this supply chain consignment.	0..n
<b>ABIE</b>	<b>UN01004104</b>	<b>Supply Chain Consignment Item</b>	<b>An item within a supply chain consignment of goods separately identified for transport and customs purposes.</b>	
BBIE	UN01004104	ID	The identifier for this supply chain consignment item.	0..1
BBIE	UN01004106	Type Code	The code specifying the type of supply chain consignment item. Use the codelist of (7357) : Code number of the goods in accordance with the tariff nomenclature system of classification (HS code) in use where the Customs declaration is made.	0..1
ASBIE	UN01004153	Included Supply Chain Trade Line Item	A trade line item included in this supply chain consignment item.	0..n
<b>ABIE</b>	<b>UN01004417</b>	<b>Supply Chain Trade Line Item</b>	<b>A collection of information specific to an item being used or reported on for supply chain trade purposes.</b>	
ASBIE	UN01004431	Specified Trade Product	A product specified for this supply chain trade line item.	0..n
<b>ABIE</b>	<b>UN01004679</b>	<b>Trade Product</b>	<b>Any tangible output or service produced by human or mechanical effort or by a natural process for trade purposes.</b>	
BBIE	UN01004689	Description	The textual description for this trade product.	0..1
BBIE	UN01007265	Unit Type Code	The code specifying a type of unit for this trade product.	0..1
BBIE	UN01007266	Content Unit Quantity	The number of content units of this trade product.	0..1

Note 1: It is possible to insure multiple consignments in a shipment which is using same transport movement.

## 5.6 Business Rules

This Business Requirement Specification is focused on developing, maintaining and publishing the semantic foundation to support the UNCITRAL Model Law on Electronic Transferable Records (MLETR) implementation.

## 6 Definition of Terms

<b>Terms</b>	<b>Definition</b>
Accountee	An accountee party who opens the documentary credit for the settlement of a trade.
Assured	An assured party insured by this insurance. The assured is the party who receives the financial protection or indemnity against specified risks, such as damage to a vessel or cargo during transit.
Bonus rate of insurance	The percentage of insurance premium returned to the assured.
Certificate holder	The party listed on the cargo insurance certificate as the recipient of the document.
Claim Agent	A party who processes claims from an assured, conduct investigations, and manage the claims payment on behalf of the insurer.
Coinsurance	Coinsurance in cargo insurance refers to a clause in the policy that requires the policy holder to insure their goods for a value equal to or close to their full actual value. If the policy holder insures the goods for less than this value, they may share in the loss in proportion to the amount underinsured.
Customs Duty Insurance	The customs duty insurance covers the financial loss incurred due to the non-recovery of customs duties and taxes paid on imported goods.
Designated Party	A designated party refers to the party who has been specifically assigned or appointed to fulfill a certain role or responsibility within a particular context.
EIR: Equipment Interchange Receipt	The EIR serves as proof that a specific piece of equipment, such as a container, has been received or returned by a particular party.

ICC: Institute Cargo Clauses	The Institute Cargo Clauses (ICC) are a set of standard clauses used in marine cargo insurance policies to outline the extent of coverage provided for goods while they are being transported by sea. These clauses are developed and published by the Institute of London Underwriters (ILU), now known as the International Underwriting Association of London (IUA), and they serve as a foundation for marine cargo insurance contracts worldwide.
Insurance Agent	An insurance agent is one of insurance intermediary who works on behalf of the insurer.
Insurance Applicant	The applicant trade party for this cargo insurance process. The consigner, the consignee, the insurance broker or the forwarder may become the applicant of the insurance.
Insurance Broker	An insurance broker is one of insurance intermediary who works on behalf of the assured.
Insurance Certificate	An insurance certificate is a document issued by an insurance company to provide evidence of insurance coverage. It serves as proof that the assured has purchased insurance and is covered against specific risks or liabilities.
Insurance Policy	An insurance policy is a contract between the assured and the insurer that outlines the terms and conditions of the insurance coverage. The policy specifies the type of insurance coverage provided, the risks covered, the coverage limits, the premium amount, and other important details.
Insurance Premium	An insurance premium is the amount of money a party pays to an insurance company in exchange for insurance coverage.
Insurer	An insurer, also known as an insurance company, is a party who sells insurance policies in exchange for premiums. The insurer agrees to provide financial protection or reimbursement against specified risks in the insurance policy.
Managing general agent	A Managing General Agent (MGA) in the cargo insurance industry is a specialized intermediary between insurance carriers (underwriters) and brokers or policy holders. MGAs are granted significant authority by insurers to act on their behalf, enabling them to underwrite policies, manage claims, and perform other administrative tasks.

Policy holder	The policy holder of cargo insurance is the party that purchases and owns the cargo insurance policy.
Surveyor	An independent party who investigates claims such as the damage or the loss.
Transport Service Provider	A party that provides a transport service, such as carrier.